

# L A G R A N D

T. 128 N. - R. 38 W.

- INTERSTATE HIGHWAY
  - STATE HIGHWAY
  - COUNTY ROAD
  - TOWNSHIP ROAD
  - CITY STREETS
  - PAVED SURFACE
  - GRAVEL SURFACE
  - DRIVEWAY
- INTERSTATE HIGHWAY
  - STATE HIGHWAY
  - COUNTY STATE AID HWY
  - COUNTY ROAD

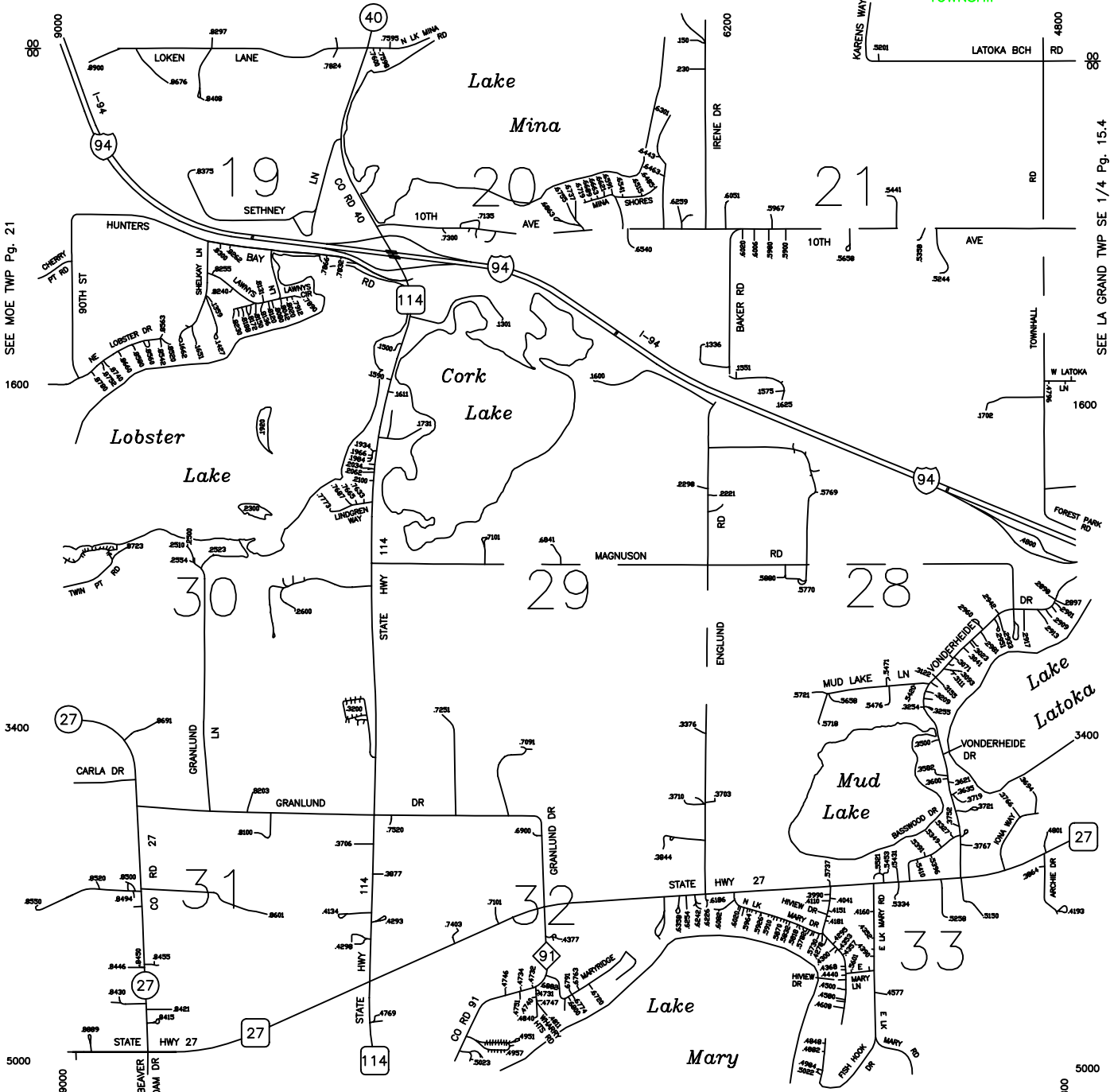
LA GRAND

6	5	4	3	2	1
7	8	9	10	11	12
13	14	15	16	17	18
19	20	21	22	23	24
25	26	27	28	29	30
31	32	33	34	35	36

TOWNSHIP

SURVEY DIVISION, DOUGLAS COUNTY PUBLIC WORKS CENTER  
 505 3RD AVE. W. P.O. BOX 308  
 ALEXANDRIA, MINNESOTA 55308  
 PHONE: (320) 743-4501  
 MAY 1, 2005

SEE LA GRAND TWP NW1/4 Pg. 15.1



15.3 LA GRAND TWP SW1/4

SEE LAKE MARY TWP Pg. 16

SEE MOE TWP Pg. 21

SEE LA GRAND TWP SE 1/4 Pg. 15.4